

Annandale St - York Place

Week Commencing 14 June 2010

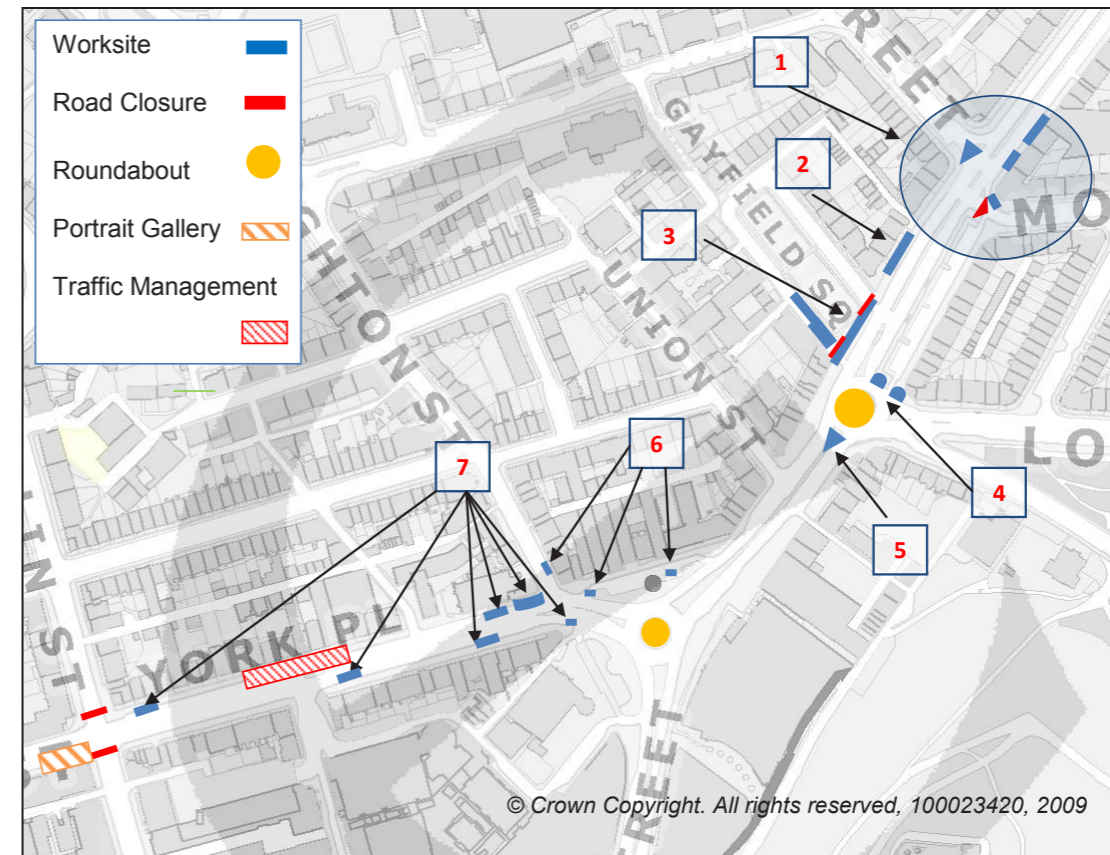
Annandale Street to York Place tram works from Monday 14 June 2010

The table below summarises current tramworks between Annandale Street and York Place.

Site	Comm Date	Description	Duration
1	14 June	Annandale Street / Montgomery Street Junction – Scotland Gas Network Gas Abandonment of Aged Mains Network <ul style="list-style-type: none"> Montgomery Street CLOSED at junction of Elm Row Worksites at junction of Annandale Street/ Footpath works corner of Montgomery Street / Sites at the junction of Elm Row (2) Close to pedestrian crossing on southbound carriageway Suspension of parking and loading around (4) sites where applicable to accommodate works Pedestrian access maintained Access to Elm Row (behind hedging) from Montgomery Street maintained at all times Banned right turn from Elm Row into Annandale Street 	Mid July
2	14 June	Gayfield Place - Scotland Gas Network Gas Abandonment of Aged Mains Network <ul style="list-style-type: none"> Carriageway restrictions approaching the site Suspension of parking and loading around worksites where applicable Temporary bus stop installed in agreement with Lothian Buses 	Mid July
3	14 June	Gayfield Square - Scotland Gas Network Gas Abandonment of Aged Mains Network / Scottish Water Network Connection <ul style="list-style-type: none"> CLOSURE of both North and South Entrances Pedestrian access will be maintained Suspension of parking and loading where applicable to accommodate works One-Way system revoked Traffic diversion signed posted via Broughton Street, Broughton Place, East London Street City Car Club parking bays relocated 	Mid July
4	14 June	London Road-Round-About - Scotland Gas Network Gas Abandonment of Aged Mains Network <ul style="list-style-type: none"> Worksite on southbound carriageway next to pedestrian crossing Worksites either side of Elm Row southbound exit Pedestrian access maintained at all time 	Mid July
5	14 June	Baxters Place - Scotland Gas Network Gas Abandonment of Aged Mains Network <ul style="list-style-type: none"> Worksite positioned in central carriageway south junction of London Road round-about Carriageway restrictions to accommodate works 	Mid July
6	14 June	Picardy Place/Broughton Street – Scottish Water Testing Points <ul style="list-style-type: none"> Worksite at west entrance to Picardy Place CLOSED Worksite on eastbound carriageway at the junction of Broughton Street Suspension of parking and loading where applicable to accommodate works Pedestrian access maintained at all time Construction of BT Box 	Late July
	8 June		Late June
7	14 June	York Place - Scottish Water Testing Point & Scottish Power Works <ul style="list-style-type: none"> Testing points at the following locations: <ul style="list-style-type: none"> Junction Cathedral Lane next to Conan Doyle Westbound carriageway of York Place Eastbound carriageway of York Place outside St Paul's & St George Church & Eastbound Lane corner of Dublin Street East corner of Elder Street on westbound carriageway Pedestrian crossing on York Place is closed The east / west pedestrian crossing will remain operational Access maintained into Elder Street and the Bus Station Pedestrian access maintained 	Late July

	Ongoing	<ul style="list-style-type: none"> Scottish Power Works 	Late June
8	Ongoing Works	Broughton Street to Dublin Street BT Testing <ul style="list-style-type: none"> Ongoing BT Testing works to prove ducting network between Broughton Street, York Place, Elder Street and Dublin Street Boxes Night-Time Operation between 19:30 and 06:00 Works can only take place when St Andrew Square Bus Station is closed Dublin Street closed to traffic with pedestrian access maintained Dublin Street will not re-open to traffic as part of the planned tram construction North St Andrew Street closed to traffic with pedestrian access maintained <p>These works are continual albeit our contractors will not be working in all BT box locations at the same time. Locations are subject to BT Consultation</p>	Late June

In addition to these works there is a programme of options for the MASS barrier between Picardy Place and Dalmeny Street. The design of this reinstatement is subject to a road safety audit which is being reviewed. These works are expected to commence soon and in order to minimise any disruption to local traffic management, the City of Edinburgh Council may grant permission for this work to take place 24 hours a day. Every effort will be made to minimise any disruption to local residents and businesses.



Whilst the information provided is correct at the time of publication, this may be subject to change based on technical and operational requirements. This does not include emergency works requested by the City of Edinburgh Council, Lothian & Borders Police, Lothian Buses or the utility company.

Find out more about Edinburgh Trams on;



Or call our customer helpline on 0800 328 3934